

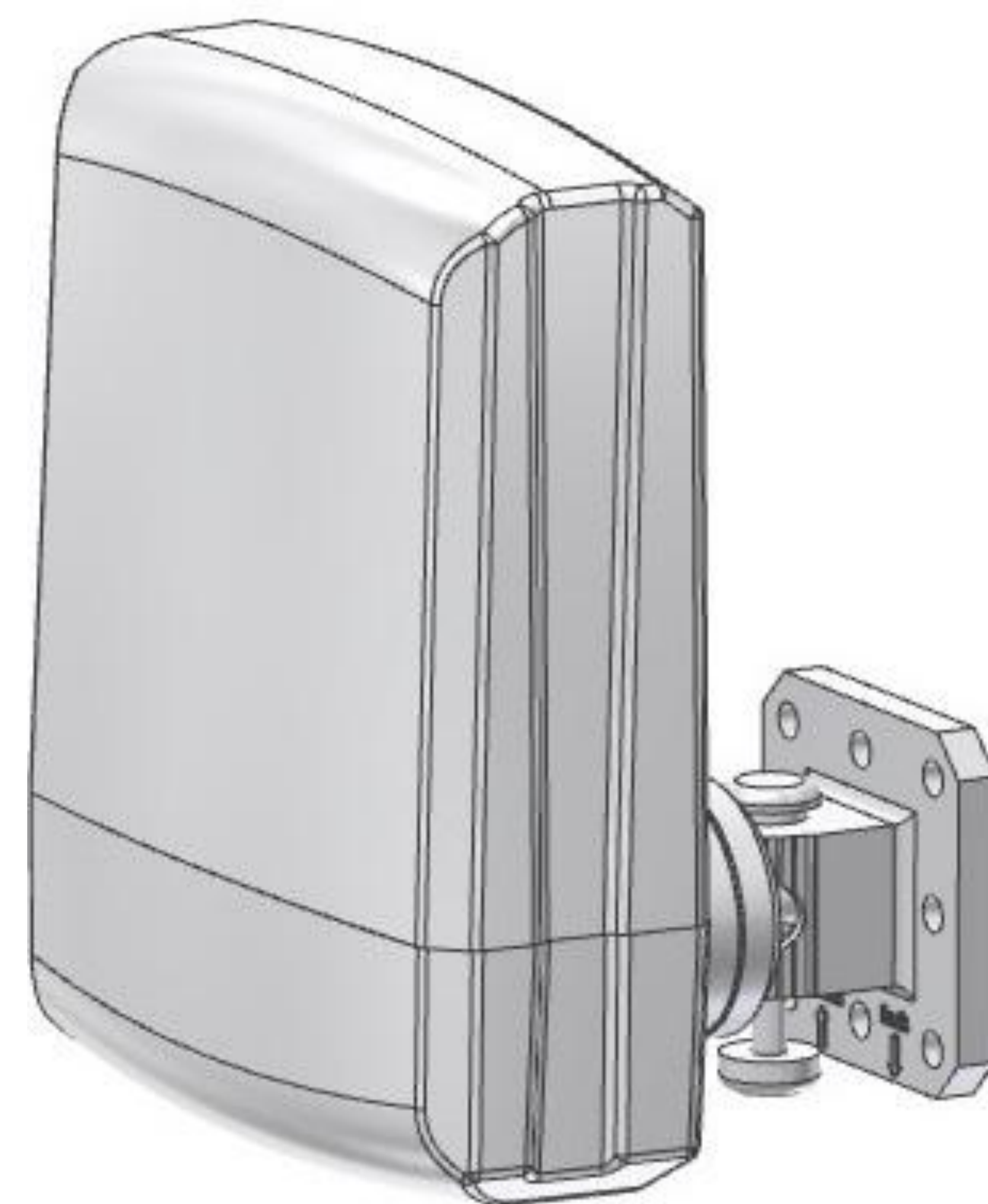
Multi-Band Patch Antenna(이통3사공용)

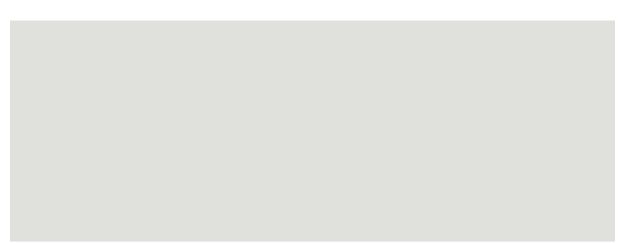
824 ~ 894, 1750 ~ 2400 MHz / 7 dBi

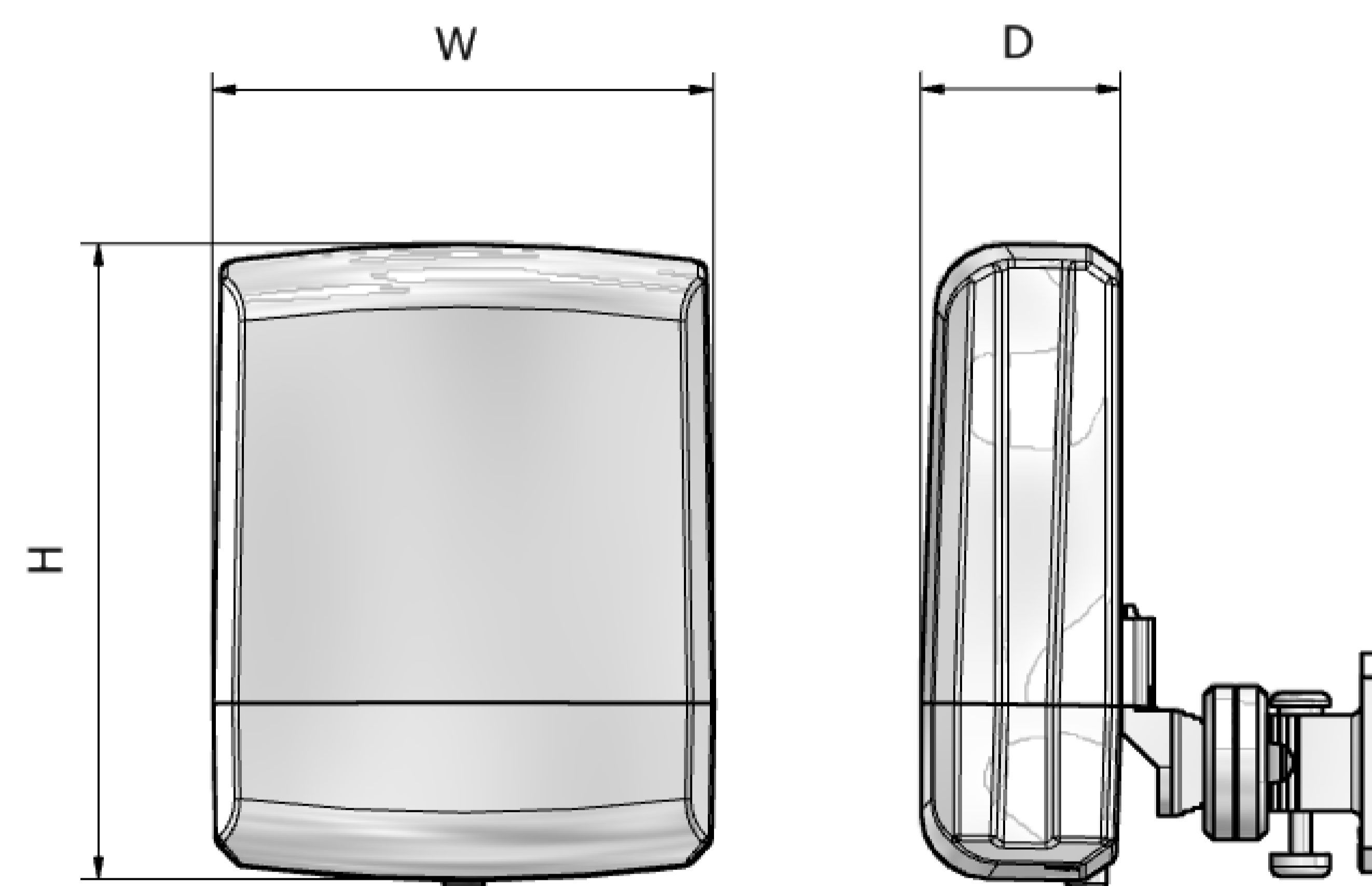


CPWI-CPB-47

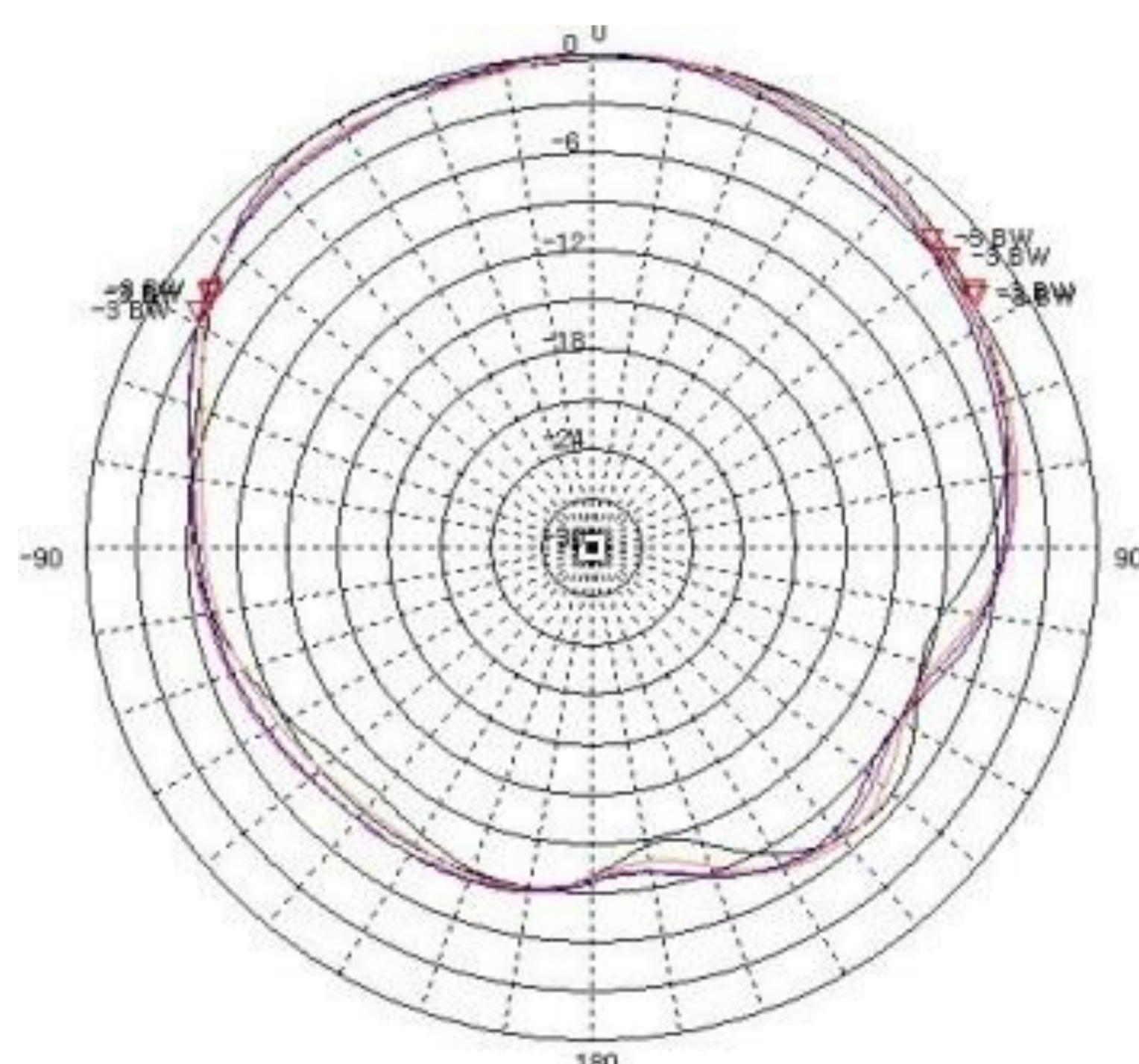
i. Electrical Specification			
Frequency Range		824 ~ 894 MHz	1750 ~ 2400 MHz
Polarization		Vertical	
Band Width		70 MHz	650 MHz
Gain		≥ 4 dBi	≥ 7 dBi
Beam width	Horizontal	90 ± 40°	60 ± 20°
	Vertical	90 ± 40°	60 ± 20°
F-B ratio (Horizontal & Vertical)		5dB @ -180 ± 30°	10dB @ -180 ± 30°
VSWR		1 : 2.0	1 : 1.5
Impedance		50 Ω	
IMD (3rd)		≤ -140dBc @ 2x37dBm	
IMD (5th)		≤ -160dBc @ 2x37dBm	
Maximum input power		≤ 10 W	



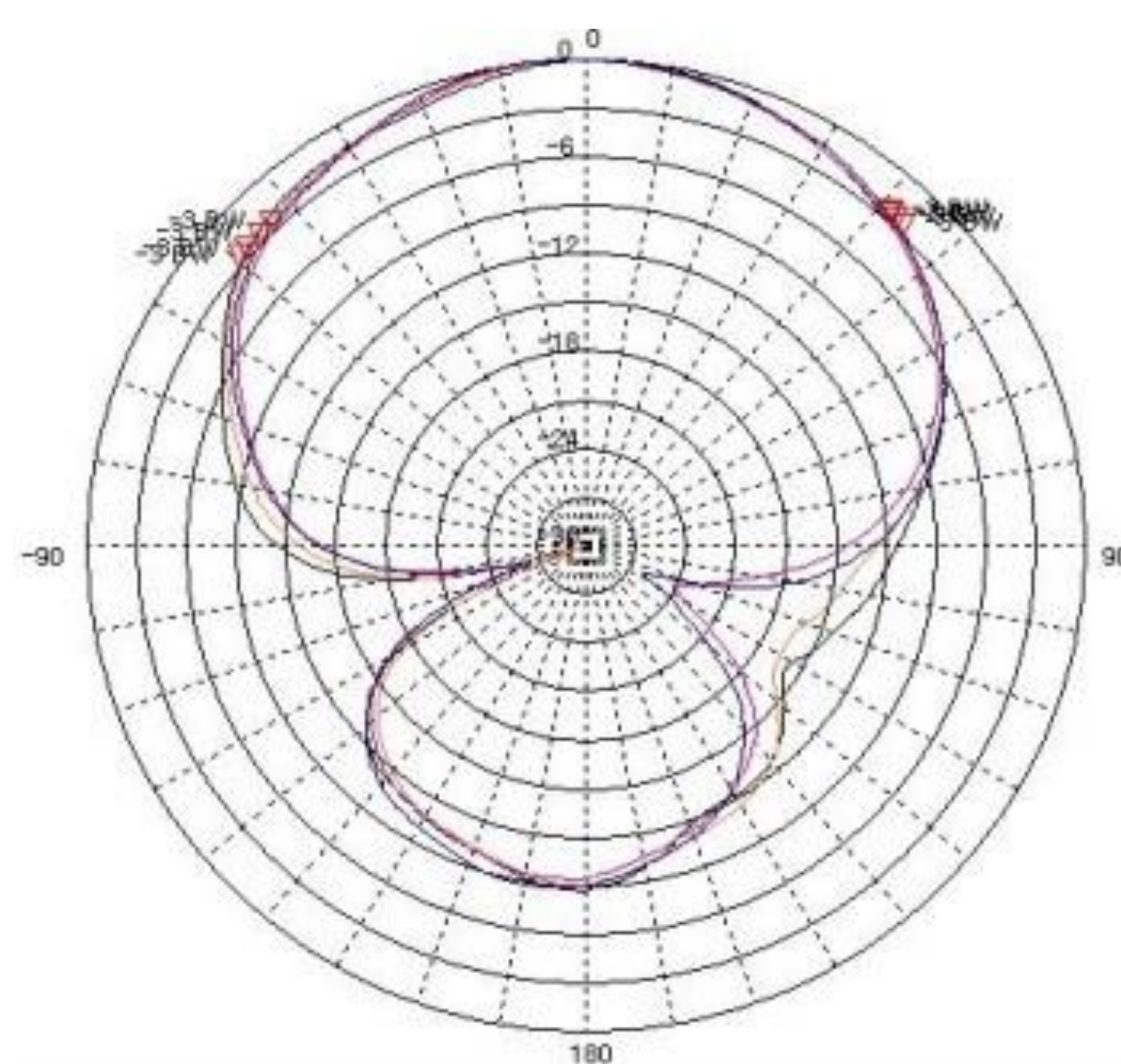
ii. Mechanical Specification	
Radom Dimension (H x W x D)	145 x 111 x 45 mm
Weight (Include bracket)	≤ 500 g
Connector Type	N-J (Female)
Withstand Wind Pressure	60 m/sec
Radome Material	ASA
Radome Color	 Cool Gray 1C
Mechanical Down Tilt	Up, Down ± 30°
	Left, Right ± 30°
Temperature	-40 °C ~ 70 °C
Packing Size (H x W x D) 20SET	-
Packing Weight 20SET	-



iii. Radiation Pattern

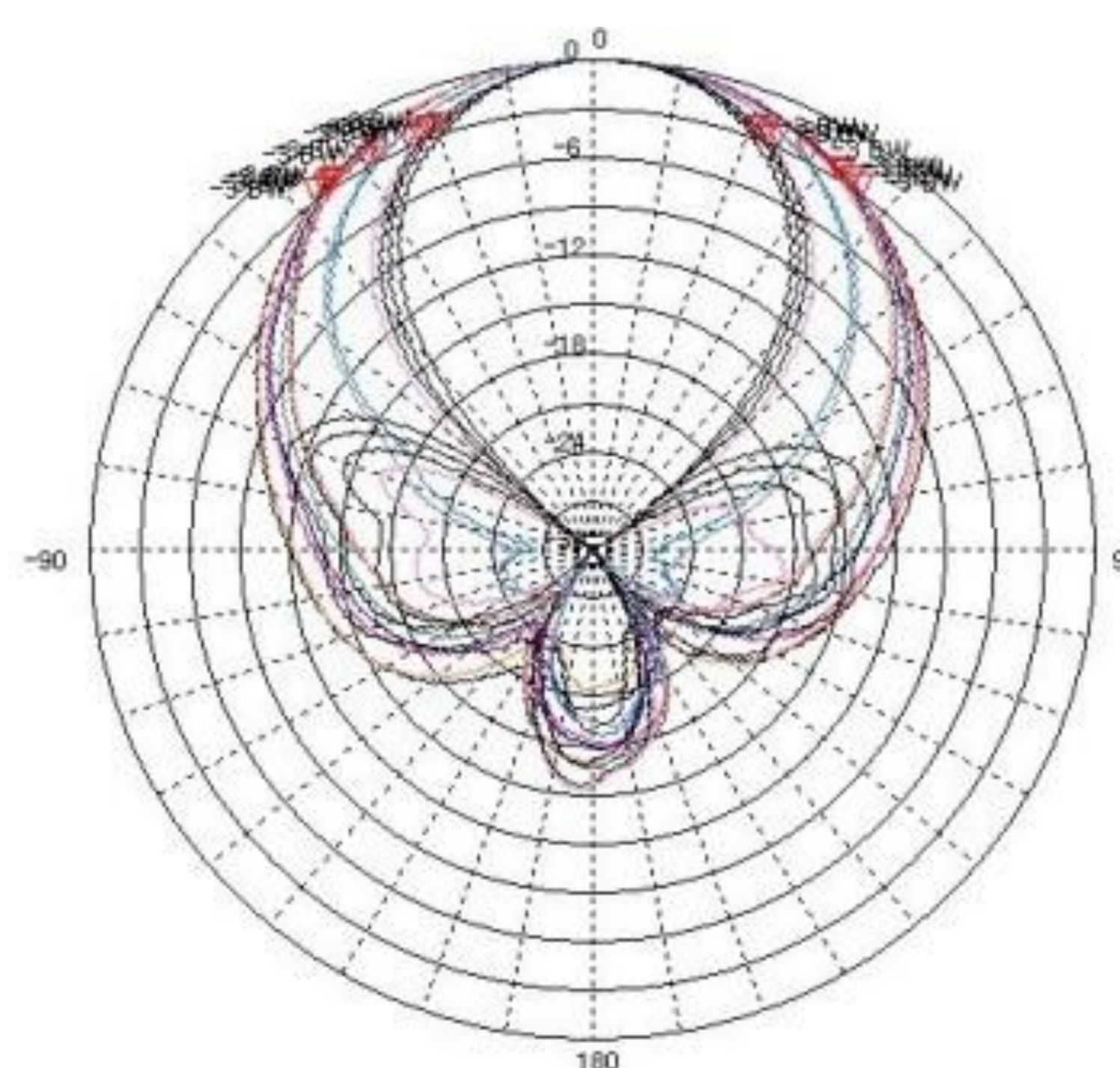


Horizontal Pattern

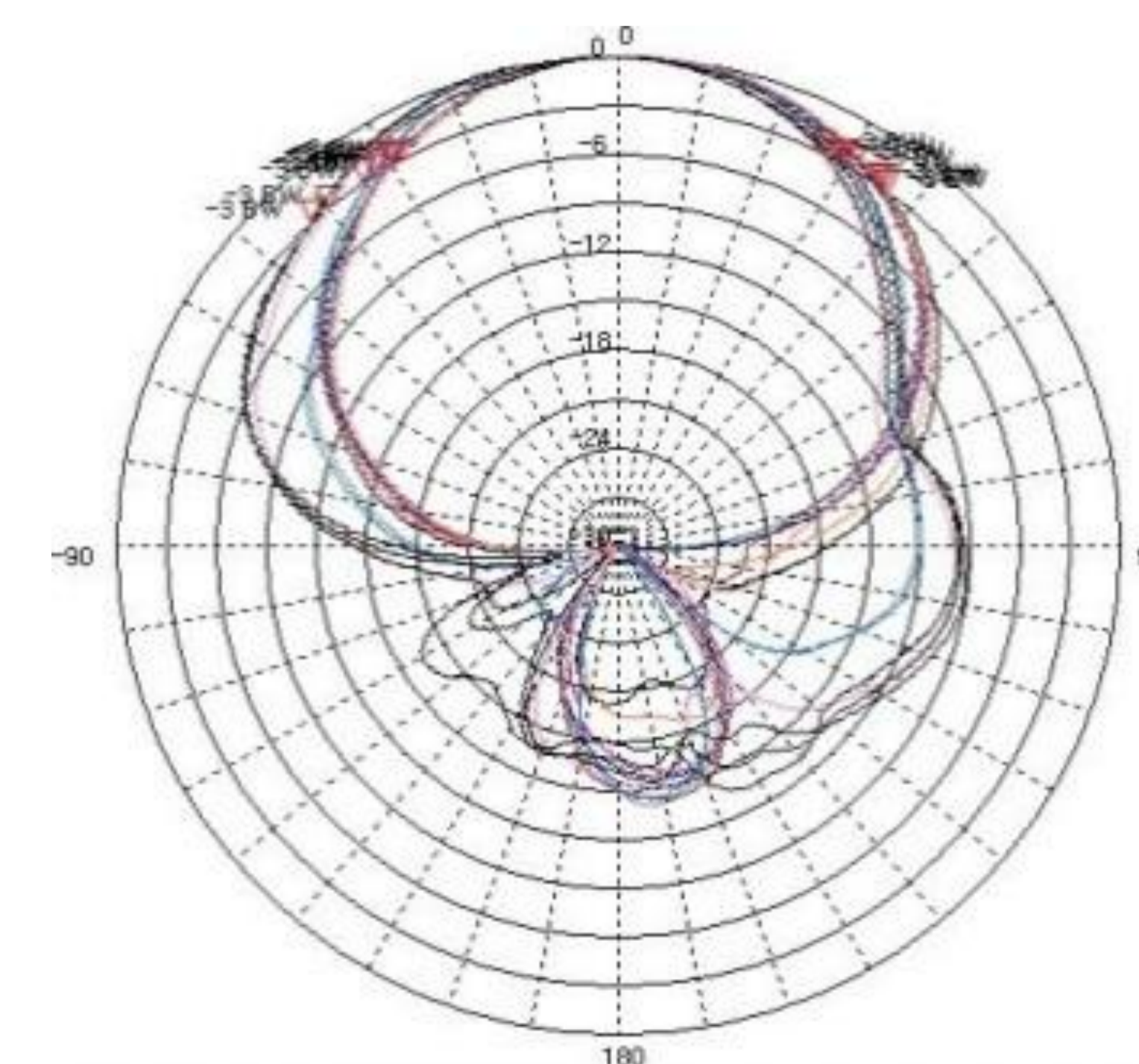


Vertical Pattern

Low Band



Horizontal Pattern



Vertical Pattern

High Band